

Our goal is to provide our customers the best possible service in a courteous, effective manner, showing respect for those we are fortunate to serve.

Island Disposal Waste Connections Company

Office Location:
19832 ST RT 20
Coupeville, WA. 98239
Tel (360) 678-5701/321-1331
Office Hours: Monday – Friday
8:00am – 4:30pm

Email:
olpislanddisposal@wasteconnections.com

Website:
www.wasteconnections.com

Mailing address:
P.O. BOX 990
Coupeville, WA 98239

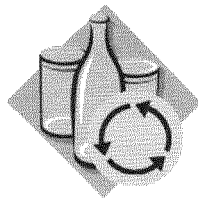
At Island Disposal, we are committed to providing our customers with options that will help **YOU** make the right choice to reduce your monthly bill.

4 Easy Ways to reduce your overall disposal bill:

- 1) **Participate** in Recycling Drop Off Sites.
- 2) Learn **what** to recycle and encourage others to participate.
- 3) **Reduce and Reuse** to minimize what you are throwing away.
- 4) Evaluate your garbage **can size or collection frequency** for the most cost effective service.

Encourage your County Commissioners to approve a Curbside Recycling program.

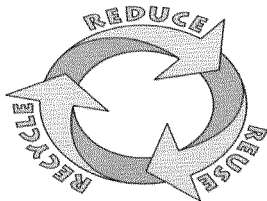
We do not provide curbside recycling at this time but have been actively working towards providing you with new recycling service. Recycling is easy and saves resources. **ACTIVELY RECYCLING WILL REDUCE YOUR BILL.**



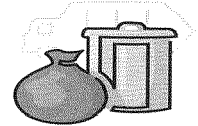
Recycle Drop Off Sites

Island County Solid Waste: 360-678-3328

20018 SR 20, Coupeville WA 98239
5790 S Kramer Rd, Langley WA 98260
326 N Oak Harbor Rd WA 98277



Garbage Can Size: Selecting the correct size is important. A standard can is 32-gallon and a mini can is 20-gallon. We offer weekly, every other week or once-a-month service – be sure your can(s) are at curbside by 6:00 a.m.! The weight limit for the standard 32-gallon can is 40lbs. Keep in mind, overfilled or overweight cans, additional bags, boxes, will cost extra. Be sure to select the number of cans that meets your needs and give **recycling** a chance to work for **YOU!**



Island Disposal, Inc. G-154	
Garbage Rates	
Residential Cans	Current Tariff Rate per month
Billed Every Other Month	
Once a Month	\$7.20
Mini	\$13.75
1 (32 Gallon) Can Every Other Week	\$13.38
1 (32 Gallon) Can	\$17.35
2 (32 Gallon) Cans	\$25.12
3 (32 Gallon) Cans	\$36.29
4 (32 Gallon) Cans	\$44.98
5 (32 Gallon) Cans	\$57.18

Payment Options: You may pay by mail with check, money order, or a credit card payment can be made by phone or through our website. We accept Visa, MasterCard, and American Express. For our online bill pay option, please visit www.wasteconnections.com. Payments can also be made at our office Island Disposal 19832 State Route 20 Coupeville, WA 98239 / Monday – Friday 8:00am – 4:30pm

You may obtain a copy of the Commission’s brochure by request from the Washington Utilities and Transportation Commission at the toll free telephone number or email address above, or by contacting our office at the phone or email address below. Upon request, we are happy to forward a copy of the Commission’s Consumer brochure electronically.

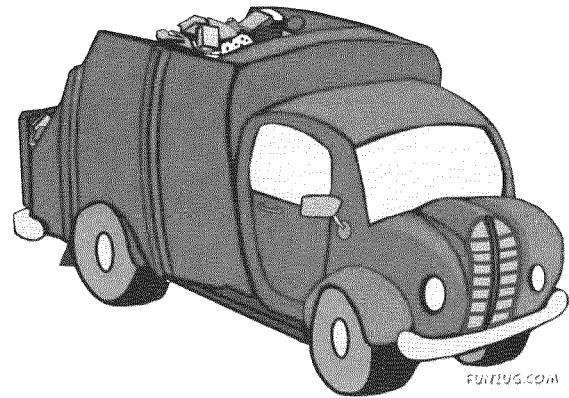
In addition, at our address at the top of the page, the following items are available for review and inspection during business hours:

*****NOTE:** Our drivers work all holidays except on Christmas Day; See the chart below for the **2016** schedule:

Regular Pick up Day	Thanksgiving Week	Christmas Week	New Year’s Week
MON	No change	No change	No change
TUES	No change	No change	No change
WED	No change	No change	No change
THURS	No change	No change	No change
FRI	No change	No change	No change

Inclement Weather: If we are unable to provide service due to weather and/or road conditions your driver will take extra bags/cans on your next regularly scheduled pick up equivalent to your missed service at no additional charge. **No credit will be issued** for missed pick up due to inclement weather. Please call our office to confirm if your service was delayed due to weather.

Garbage and recycling services are regulated by the Washington Utilities and Transportation Commission. Their address is 1300 S. Evergreen Park Dr. SW, Olympia, WA 98504-7250 or PO Box 47250, Olympia, WA 98504-7250.
E-mail: comments@wutc.wa.gov
Telephone: 1-800-562-6150



- The WUTC’s solid waste rules, chapter 480-70 WAC
- The Company’s current certificate
- The Company’s current rates and regulations/tariff
- The WUTC Consumer Brochure
- A map of the Company’s service territory

Thank you for your patronage!

“Waste Connections Companies”

